



Please see Important Safety Information on pages 6-9 or 38-41. Please see patient Medication Guide and full Prescribing Information, including Boxed Warning regarding serious liver problems, attached.

 **SUTENT**^{capsules}
sunitinib malate

For my fight

A HANDBOOK FOR YOUR TREATMENT WITH SUTENT[®]

This guide is designed to help you understand your cancer and your treatment. It's important to learn all you can...

**AFTER
DIAGNOSIS**

 HAVE SOMEONE WHO CARES FOR YOU?

GIVE THEM THIS PAMPHLET TO HELP
THEM LEARN ABOUT YOUR TREATMENT.

Please see Important Safety Information on pages 6-9 or 38-41. Please see patient Medication Guide and full Prescribing Information, including Boxed Warning regarding serious liver problems, attached.

 **SUTENT**^{capsules®}
sunitinib malate
For my fight

GET THE FACTS ABOUT YOUR CANCER AND YOUR TREATMENT WITH SUTENT

For more than 6 years, SUTENT has been a widely used therapy in the treatment of patients with advanced RCC and certain patients with GIST.*

SUTENT is used to treat:

- Advanced kidney cancer (advanced renal cell carcinoma or RCC)
- GIST (gastrointestinal stromal tumor). This is a rare cancer of the stomach, bowel, or esophagus. SUTENT is used when the medicine Gleevec® (imatinib mesylate) did not stop the cancer from growing or when you cannot take Gleevec
- A type of pancreatic cancer known as pancreatic neuroendocrine tumors (pNET), that has progressed and cannot be treated with surgery

Your doctor prescribed SUTENT for you because SUTENT may slow or in some cases may stop cancer's progression. SUTENT may also help shrink some tumors. SUTENT is not a cure and not all patients will experience the same result.

Gleevec is a registered trademark of Novartis AG.

Please see Important Safety Information on pages 6-9 or 38-41. Please see patient Medication Guide and full Prescribing Information, including Boxed Warning regarding serious liver problems, attached.

WHAT YOU WILL FIND IN THIS HANDBOOK

If you or someone you care about has been prescribed SUTENT, this handbook can help you learn about the cancer and its treatment. In this section you will learn how SUTENT works and how to take it. Also included in this handbook is information about:

SUTENT AND ADVANCED RCC

Details about the most common type of kidney cancer and how SUTENT may slow or in some cases may stop its progression[†]

SUTENT AND CERTAIN PATIENTS WITH GIST*

Details about gastrointestinal stromal tumor and how SUTENT may slow or in some cases may stop this type of cancer[†]

SUTENT AND ADVANCED PANCREATIC NET

Details about pancreatic NET and how SUTENT may slow or in some cases may stop the growth of this specific type of tumor[†]

POSSIBLE SIDE EFFECTS

Learn about the possible side effects of SUTENT and how some can be managed

MORE YOU CAN DO

Healthy choices you can make and where to find more support when you need it

**GIST (gastrointestinal stromal tumor). This is a rare cancer of the stomach, bowel, or esophagus. SUTENT is used when the medicine Gleevec (imatinib mesylate) did not stop the cancer from growing or when you cannot take Gleevec.*

[†] SUTENT is not a cure and not all patients will experience the same result.

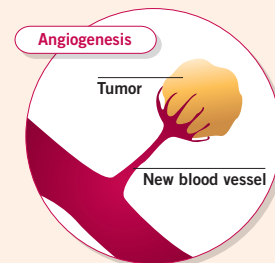
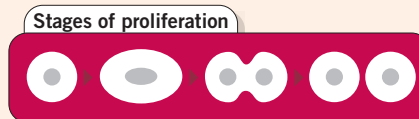

SUTENT^{capsules}
sunitinib malate
For my fight

HOW SUTENT WORKS

SUTENT BLOCKS TWO BASIC ACTIONS OF CANCER

The medicine in SUTENT works by blocking two ways that help cancers grow and spread:

- **Proliferation** occurs when a cell divides to make more cells. These cells are the same size and shape in most organs of the body. Cancer cells also proliferate but at a much higher rate. Cancer cells grow in abnormal shapes
- **Angiogenesis** is the growth of new blood vessels. This occurs in healthy organs. But when it occurs in tumors, these blood vessels are abnormal and contribute to tumor growth



SUTENT may not work the same way in every person.

Please see Important Safety Information on pages 6-9 or 38-41. Please see patient Medication Guide and full Prescribing Information, including Boxed Warning regarding serious liver problems, attached.

LEARN MORE ABOUT HOW SUTENT TREATS CANCER

In clinical studies, SUTENT was shown to help slow or in some cases stop the growth and spread of cancer. SUTENT may also help shrink some tumors. SUTENT is not a cure and not all patients will experience the same result.

Learn how effective SUTENT can be in the treatment of:

Advanced kidney cancer (renal cell carcinoma or RCC)	Page 21
Certain patients with gastrointestinal stromal tumor (GIST)*	Page 28
Advanced pancreatic neuroendocrine tumor (pNET)	Page 35

HAVE QUESTIONS ABOUT HOW SUTENT WORKS?

**Call 1-877-5-SUTENT (1-877-578-8368), 9:30 AM to 7 PM ET,
Monday through Friday to speak with an Oncology Certified Nurse.**

**GIST (gastrointestinal stromal tumor). This is a rare cancer of the stomach, bowel, or esophagus. SUTENT is used when the medicine Gleevec® (imatinib mesylate) did not stop the cancer from growing or when you cannot take Gleevec.*


SUTENT^{capsules}
sunitinib malate
For my fight

SAFETY INFORMATION YOU NEED TO KNOW

IMPORTANT SAFETY INFORMATION

SUTENT can cause serious liver problems, including death.

Tell your healthcare provider right away if you develop any of the following signs and symptoms of liver problems during treatment with SUTENT:

- Itching
- Yellow eyes or skin
- Dark urine
- Pain or discomfort in the right upper stomach area

Your healthcare provider should do blood tests to check your liver function before you start taking SUTENT and during treatment.

Pregnancy and breastfeeding:

- SUTENT may harm an unborn baby. You should not become pregnant while taking SUTENT. Tell your healthcare provider right away if you become pregnant while taking SUTENT
- Do not breastfeed while taking SUTENT

Tell your healthcare provider about all the medicines you take, including prescription medicines and nonprescription medicines, vitamins, and herbal supplements. Using SUTENT with certain other medicines can cause serious side effects. You may have an increased risk of severe jaw bone problems (osteonecrosis) if you take SUTENT and a bisphosphonate medicine (Actonel, Aredia, Boniva, Didronel, Fosamax, Reclast, Skelid, or Zometa). Talk with your healthcare provider before starting any new medicines.

Please see patient Medication Guide and full Prescribing Information, including Boxed Warning regarding serious liver problems, attached.

Tell all of your healthcare providers and dentists that you are taking SUTENT. They should talk to the healthcare provider who prescribed SUTENT for you, before you have **any** surgery, or medical or dental procedure.

SUTENT may cause serious side effects, including:

- **Serious liver problems, including death**
- **Heart problems**—Heart problems may include heart failure and heart muscle problems (cardiomyopathy) that can lead to death. Tell your healthcare provider if you feel very tired, are short of breath, or have swollen feet and ankles
- **Abnormal heart rhythm changes**—Your healthcare provider may do electrocardiograms and blood tests to watch for these problems during your treatment with SUTENT. Tell your healthcare provider if you feel dizzy, faint, or have abnormal heartbeats
- **High blood pressure**—Your healthcare provider may check your blood pressure during treatment with SUTENT. Your healthcare provider may prescribe medicine for you to treat high blood pressure, if needed
- **Bleeding sometimes leading to death**—Tell your healthcare provider right away if you have any of these symptoms or a serious bleeding problem:
 - Painful, swollen stomach (abdomen)
 - Vomiting blood
 - Black, sticky stools
 - Bloody urine
 - Headache or change in your mental status

Your healthcare provider can tell you other symptoms to watch for.

(Continued on next page.)


SUTENT^{capsules}
sunitinib malate
For my fight

SAFETY INFORMATION YOU NEED TO KNOW

(Continued from previous page.)

- **Jaw-bone problems (osteonecrosis)**—Severe jaw bone problems may happen. Your healthcare provider should examine your mouth before you start SUTENT. Your healthcare provider may tell you to see your dentist before you start SUTENT
- **Tumor lysis syndrome (TLS)**—TLS is caused by the fast breakdown of cancer cells and may lead to death. TLS may cause you to have nausea, shortness of breath, irregular heartbeat, clouding of urine and tiredness associated with abnormal laboratory test results (high potassium, uric acid and phosphorous levels and low calcium levels in the blood) that can lead to changes in kidney function and acute kidney failure. Your healthcare provider may do blood tests to check you for TLS
- **Hormone problems, including thyroid and adrenal gland problems**—Your healthcare provider may do tests to check your thyroid and adrenal gland function during SUTENT treatment. Tell your doctor if you have any of the following signs and symptoms:
 - Tiredness that worsens and does not go away
 - Loss of appetite
 - Nausea or vomiting
 - Diarrhea
 - Fast heart rate
 - Weight gain or weight loss
 - Feeling depressed
 - Heat intolerance
 - Feeling nervous or agitated, tremors
 - Sweating
 - Irregular menstrual periods or no menstrual periods
 - Headache
 - Hair loss

Please see patient Medication Guide and full Prescribing Information, including Boxed Warning regarding serious liver problems, attached.

Common side effects of SUTENT include:

- The medicine in SUTENT is yellow, and it may make your skin look yellow. Your skin and hair may get lighter in color
- Tiredness
- Weakness
- Fever
- Gastrointestinal symptoms, including diarrhea, nausea, vomiting, mouth sores, upset stomach, abdominal pain, and constipation. Talk with your healthcare provider about ways to handle these problems
- Rash or other skin changes, including drier, thicker, or cracking skin
- Blisters or a rash on the palms of your hands and soles of your feet
- Taste changes
- Loss of appetite
- Pain or swelling in your arms or legs
- Cough
- Shortness of breath
- Bleeding, such as nosebleeds or bleeding from cuts

Call your healthcare provider if you have any swelling or bleeding during treatment with SUTENT.

You are encouraged to report negative side effects of prescription drugs to the FDA. Visit www.fda.gov/medwatch, or call 1-800-FDA-1088.

HAVE QUESTIONS ABOUT WAYS TO HELP MANAGE COMMON SIDE EFFECTS?

Call 1-877-5-SUTENT (1-877-578-8368), 9:30 AM to 7 PM ET, Monday through Friday to speak with an Oncology Certified Nurse.

 **SUTENT**^{capsules}
sunitinib malate

For my fight

HOW TO TAKE SUTENT

BEFORE TAKING SUTENT

Tell your healthcare provider if you:

- Have any heart problems
- Have high blood pressure
- Have thyroid problems
- Plan to have surgery
- Have kidney function problems (other than cancer)
- Have liver problems
- Have any bleeding problem
- Have seizures
- Have any other medical conditions



HAVE QUESTIONS ABOUT HOW YOU TAKE SUTENT?

**Call 1-877-5-SUTENT (1-877-578-8368), 9:30 AM to 7 PM ET,
Monday through Friday to speak with an Oncology Certified Nurse.**

Please see Important Safety Information on pages 6-9 or 38-41. Please see patient Medication Guide and full Prescribing Information, including Boxed Warning regarding serious liver problems, attached.

YOUR DOSE ON SUTENT

SUTENT comes in 12.5 mg, 25 mg, and 50 mg capsules. These are taken by mouth usually once daily, with or without food. Learn about the recommended dose or dose schedule for each.

Recommended dosage for advanced RCC and certain patients with GIST*

Most people with RCC and GIST take 50 mg of SUTENT on a dosing cycle as follows:

- SUTENT is taken every day for 4 weeks (28 days), then it is stopped for 2 weeks (14 days)
- This cycle is repeated for as long as their doctor tells them to

Recommended dosage for advanced pancreatic NET

Most people with pancreatic NET take 37.5 mg of SUTENT continuously, without a scheduled off-treatment period

- SUTENT is taken every day
- SUTENT is taken for as long as their doctor tells them to

It's important to remember to take SUTENT as directed by your doctor.

**GIST (gastrointestinal stromal tumor). This is a rare cancer of the stomach, bowel, or esophagus. SUTENT is used when the medicine Gleevec® (imatinib mesylate) did not stop the cancer from growing or when you cannot take Gleevec.*

**SUTENT**^{capsules}
sunitinib malate
For my fight

HOW TO TAKE SUTENT

IMPORTANT THINGS TO REMEMBER

Here are a few things you should know about taking SUTENT:

- Do not open the SUTENT capsules
- Take SUTENT 1 time each day with or without food
- If you miss a dose, take it as soon as you remember. Do not take it if it is close to your next dose. Just take the next dose at your regular time. Do not take more than 1 dose of SUTENT at a time. Tell your healthcare provider about any missed dose
- Your healthcare provider may do blood tests before each cycle of treatment
- Call your healthcare provider right away if you take too much SUTENT
- Tell your doctor or nurse about all the medicines, vitamins, or herbal products you use
- Do not become pregnant while taking SUTENT. SUTENT may harm an unborn baby (cause birth defects). If you do become pregnant, tell your doctor right away. Stop taking SUTENT

WHAT NOT TO TAKE WITH SUTENT

Using SUTENT with other medicines can cause serious side effects. Tell your doctor or nurse about all the medicines, vitamins, or herbal products you use.

- Do not drink grapefruit juice or eat grapefruit because this can change the amount of SUTENT in your body
- Do not take St. John's Wort while taking SUTENT

Please see Important Safety Information on pages 6-9 or 38-41.

Please see patient Medication Guide and full Prescribing Information, including Boxed Warning regarding serious liver problems, attached.

**SUTENT**^{capsules}
sunitinib malate
For my fight



HOW TO TAKE SUTENT

EASY WAYS TO REMEMBER EACH DOSE

Since you only have to take SUTENT once a day, there are simple ways to remember each dose. Here are a few ideas you can try:

Make medicine a part of your daily routine

Take your medicine every day at the same time. For example, you may want to take it when you wake up in the morning, or just before you go to bed.

Use a weekly or monthly pill caddy

It can help you keep count of your capsules in advance, and to remember to take each day's dose.

Plan ahead

If possible, get your refills before your next treatment cycle starts.



Please see Important Safety Information on pages 6-9 or 38-41. Please see patient Medication Guide and full Prescribing Information, including Boxed Warning regarding serious liver problems, attached.

Place your pill bottle in plain sight

Keep your medicine where you will see it, such as on your nightstand. Just make sure it is out of the reach of children and pets.

Always carry an extra dose with you

No matter where you are, you will always have your medicine on hand.

Use a calendar

Record your dosage times on a calendar or planner. You can then check off each dose as you take it.

Use a diary or journal

Track your medicine and when it is time to take it. You can also use it to track symptoms and side effects for doctor visits.

Ask for a reminder

A caregiver, friend, or family member can be helpful in remembering to take each dose of your medicine. Just ask.

NEED A SUTENT PILL CADDY, CALENDAR, OR JOURNAL?

Call 1-877-5-SUTENT (1-877-578-8368), 9:30 AM to 7 PM ET, Monday through Friday to enroll in SUTENT In Touch and request your own



16

I love teaching kids about animals. That's why I volunteer at the zoo. When I was diagnosed with cancer, I wanted to fight my disease. So now I take SUTENT...

AFTER DIAGNOSIS

SUTENT AND ADVANCED RCC

LEARN ALL YOU CAN ABOUT ADVANCED RCC

Advanced RCC is a life-changing diagnosis. Stay strong and try to keep a positive outlook. If you are up for it, continue the things that make your life your own. It's important to learn all you can about your cancer and its treatment. This handbook will help you get started.

SUTENT may slow or in some cases stop the progression of advanced RCC

In a clinical study, SUTENT was proven more effective than interferon alfa (IFN α), another approved therapy for advanced RCC. SUTENT was shown to slow or in some cases stop the growth or spread of advanced RCC. SUTENT may also help shrink some tumors. SUTENT is not a cure and not all patients will experience the same result.

Learn more on page 21.

*Please see Important Safety Information on pages 6-9 or 38-41.
Please see patient Medication Guide and full Prescribing Information, including Boxed Warning regarding serious liver problems, attached.*

SUTENT^{capsules}
sunitinib maleate

For my fight

17

GET THE FACTS ABOUT RCC

THE MOST COMMON TYPE OF KIDNEY CANCER

About 60,000 people in the United States are diagnosed with kidney cancer each year. SUTENT is approved to treat the portion whose cancer is advanced.

RCC is the most common type of kidney cancer. RCC starts in the kidney. It can start as one or more tumors in a single kidney. Less often, tumors form in both kidneys at the same time.

HOW RCC STARTS AND SPREADS

Cancer cells are abnormal versions of healthy cells. They grow in many ways like these normal cells but do so at abnormal rates with irregular shapes. Here is how these cells grow and spread:



- A single RCC cell grows and divides to form two cells. This process repeats, again and again
- A tumor can be detected once enough cancer cells are made
- Some cancer cells may enter the bloodstream, spreading from the kidney to other parts of the body
- New tumors may arise in other organs. If this happens, the cancer is known as metastatic. But no matter where the cancer spreads, it will still be called RCC, because it started in the kidney

Please see Important Safety Information on pages 6-9 or 38-41. Please see patient Medication Guide and full Prescribing Information, including Boxed Warning regarding serious liver problems, attached.



STAGES OF RCC

There are four stages of RCC. To determine the cancer's stage, doctors will measure the tumor size. The images below are examples of different tumor sizes.

STAGE	DEFINITION
Stage I	Tumor is found only in the kidney and is 7 centimeters or smaller.
Stage II	Tumor is found only in the kidney and is larger than 7 centimeters.
Stage III	Cancer may be found in the kidney, one nearby lymph node, an adrenal gland, the tissue around the kidney, or the main blood vessels of the kidneys.
Stage IV	Cancer has spread beyond the kidney and may be found in multiple nearby lymph nodes or other organs, such as the intestines, pancreas, or lungs.
Recurrent RCC	Recurrent RCC is cancer that has returned after it has been treated—coming back in the kidney and/or in other parts of the body after the first treatment.
<i>Images are not actual size</i>	<div>Golf ball (5 cm) </div> <div>Tennis ball (7 cm) </div>

SUTENT AND THE TREATMENT OF ADVANCED RCC

FIND THE BEST TREATMENT FOR YOU

Depending on the stage of the cancer, several treatments may be available. These can include:

- Surgery to remove the tumor
- Chemotherapy or radiation to kill the cancer cells
- Biologics—therapies that use the body's immune system to fight cancer
- Anti-angiogenesis therapy, such as SUTENT

SUTENT is a therapy that may help slow or in some cases may stop the growth of RCC. SUTENT may also help shrink tumors. SUTENT is not a cure and not all patients will experience the same result.

SUTENT can cause serious liver problems, including death. Patients should stop taking SUTENT if they have symptoms of inflammation of the pancreas or liver failure.

Please see Important Safety Information on pages 6-9 or 38-41. Please see patient Medication Guide and full Prescribing Information, including Boxed Warning regarding serious liver problems, attached.

SUTENT HAS BEEN PROVEN EFFECTIVE IN TREATING ADVANCED RCC

A clinical study has proven that SUTENT is more effective than interferon alfa (IFN α), another approved treatment option for advanced RCC.

The results:

- Those who were treated with SUTENT experienced **nearly twice the number of months of progression-free survival compared with those patients who were taking IFN α .** Progression-free survival is the length of time from the start of treatment that patients remain alive and their disease does not worsen
- 5 times as many people on SUTENT saw their tumors shrink (103 patients taking SUTENT compared to 20 taking IFN α)

The data represent an average and not all patients may experience the same results.

GET THE MOST FROM YOUR TREATMENT

To get the most from your treatment, work closely with your doctor. In addition to the help your doctor can provide, you will also find information in this handbook about **possible side effects** and **more you can do**.



SUTENT AND CERTAIN PATIENTS WITH GIST*

LEARN ALL YOU CAN ABOUT GIST

Being diagnosed with GIST can change almost everything about your life. But you should do your best to hold on to the things you value most. That's why it's important to learn and understand as much as you can about your cancer and its treatment. This handbook will help you get started.

SUTENT may slow or in some cases stop the progression of GIST

In a clinical study, it was shown that SUTENT may slow or in some cases may stop the growth and spread of GIST. SUTENT may also help shrink some tumors. SUTENT is not a cure and not all patients will experience the same result.

Learn more on page 28.

**GIST (gastrointestinal stromal tumor). This is a rare cancer of the stomach, bowel, or esophagus. SUTENT is used when the medicine Gleevec® (imatinib mesylate) did not stop the cancer from growing or when you cannot take Gleevec.*

*Please see Important Safety Information on pages 6-9 or 38-41.
Please see patient Medication Guide and full Prescribing Information, including Boxed Warning regarding serious liver problems, attached.*


SUTENT^{capsules}
sunitinib malate
For my fight

GET THE FACTS ABOUT GIST

A RARE CANCER OF THE DIGESTIVE SYSTEM

About 3,300 to 6,600 people in the United States are diagnosed with GIST each year. SUTENT is approved to treat the portion of patients whose GIST was not controlled by the medicine Gleevec® (imatinib mesylate) or who cannot take Gleevec.

GIST starts in a part of the body called the stroma. The stroma is the lining of the digestive tract. Doctors believe that it may be caused by a gene mutation. In other words, GIST is not likely caused by a person's diet or lifestyle choices.

Please see Important Safety Information on pages 6-9 or 38-41. Please see patient Medication Guide and full Prescribing Information, including Boxed Warning regarding serious liver problems, attached.

HOW GIST STARTS AND SPREADS

Cancer cells are abnormal versions of healthy cells. So, they grow in a way similar to healthy cells. Here is how these cells grow and spread:

- A single GIST cell grows and divides to form two cells. This process repeats, again and again
- A tumor can be detected once enough cancer cells are made
- Some cancer cells may enter the bloodstream, spreading from the stroma to other parts of the body
- New tumors may arise in other organs. If this happens, the cancer is known as metastatic. But, no matter where the cancer spreads, it will still be called GIST, because it started in the stroma

GET THE FACTS ABOUT GIST

STAGES OF GIST

There are four stages of GIST. To determine the cancer’s stage, doctors will measure the tumor size, spread, and examine the cells of the tumor for differentiation (how much they look like normal cells). The image on the right is an example of tumor size.



Please see Important Safety Information on pages 6-9 or 38-41. Please see patient Medication Guide and full Prescribing Information, including Boxed Warning regarding serious liver problems, in pocket.

STAGE

DEFINITION

Stage IA

Tumor is less than 5 centimeters in size and has not spread. Tumor is well-differentiated—the cells look more like normal cells.

Stage IB

Tumor is larger than 5 centimeters in size and has not spread. Tumor is well-differentiated—the cells look more like normal cells.

Stage IIA

Tumor is less than 5 centimeters in size and has not spread. Tumor is not well-differentiated—the cells look less like normal cells.

Stage IIB

Tumor is larger than 5 centimeters in size and has not spread. Tumor is not well-differentiated—the cells look less like normal cells.

Stage III

Tumor may be larger than 5 centimeters in size and may have spread to nearby lymph nodes. Tumor may be poorly-differentiated—the cells look the least like normal cells.

Stage IV

Tumor has spread to other parts of the body (may include nearby lymph nodes).

Image is not actual size

Golf ball (5 cm)



SUTENT AND THE TREATMENT OF CERTAIN PATIENTS WITH GIST*

FIND THE BEST TREATMENT FOR YOU

Depending on the stage of the cancer, several treatments may be available. These can include:

- Surgery to remove the tumor
- Chemotherapy or radiation to kill the cancer cells
- Anti-angiogenesis therapy, such as SUTENT

SUTENT is used when the medicine Gleevec® (imatinib mesylate) did not stop the cancer from growing or when you cannot take Gleevec. Gleevec is a registered trademark of Novartis AG.

SUTENT HAS BEEN PROVEN EFFECTIVE IN TREATING CERTAIN PATIENTS WITH GIST*

A clinical study has proven SUTENT as an effective treatment for certain patients with GIST.*

The results:

- Patients treated with SUTENT experienced **4 times the number of months without tumor growth** compared to placebo

The data represent an average and not all patients may experience the same results.

Please see Important Safety Information on pages 6-9 or 38-41. Please see patient Medication Guide and full Prescribing Information, including Boxed Warning regarding serious liver problems, attached.

GET THE MOST FROM YOUR TREATMENT

To get the most from your treatment, work closely with your doctor. In addition to the help your doctor can provide, you will also find information in this handbook about **possible side effects** and **more you can do**.

SUTENT can cause serious liver problems, including death. Patients should stop taking SUTENT if they have symptoms of inflammation of the pancreas or liver failure.

Some of the most common side effects include tiredness, weakness, fever, diarrhea, nausea, vomiting, mouth sores, upset stomach, abdominal pain, constipation, skin or hair changes, taste changes, swelling, loss of appetite, and bleeding, such as from the nose or cuts. Tell your healthcare provider if you have any swelling or bleeding. Be sure to tell your healthcare provider about any side effects you have, as well as any change or increase in any side effect.

**GIST (gastrointestinal stromal tumor). This is a rare cancer of the stomach, bowel, or esophagus. SUTENT is used when the medicine Gleevec (imatinib mesylate) did not stop the cancer from growing or when you cannot take Gleevec.*





SUTENT AND ADVANCED PANCREATIC NEUROENDOCRINE TUMORS (pNET)

LEARN ALL YOU CAN ABOUT ADVANCED PANCREATIC NET

There's no question: being diagnosed with pancreatic NET is a difficult moment in any life. Learn all you can about your cancer and its treatment. Then you can do everything possible to continue the things that matter to you. This handbook will help you get started.

SUTENT may slow or in some cases stop the progression of advanced pancreatic NET

In a clinical study, it was shown that SUTENT may slow or in some cases may stop the growth or spread of advanced pancreatic NET. SUTENT may also help shrink some tumors. SUTENT is not a cure and not all patients will experience the same result.

Learn more on page 35.

Please see Important Safety Information on pages 6-9 or 38-41. Please see patient Medication Guide and full Prescribing Information, including Boxed Warning regarding serious liver problems, attached.


SUTENT^{capsules}
sunitinib malate
For my fight

GET THE FACTS ABOUT PANCREATIC NET

A RARE TYPE OF CANCER

About 1,000 new cases of pancreatic NET are diagnosed in the United States each year. SUTENT is approved to treat the portion of patients whose cancer is advanced and cannot be treated with surgery.

Pancreatic NET is a rare tumor that forms in the hormone-producing cells of the pancreas. It should not be confused with the more common type of pancreatic cancer called adenocarcinoma.

HOW PANCREATIC NET STARTS AND SPREADS

Cancer cells are abnormal versions of healthy cells. So, they grow in a way similar to healthy cells. Here is how these cells grow and spread:

- A single pancreatic NET cell grows and divides to form two cells. This process repeats, again and again
- A tumor can be detected once enough cancer cells are made
- Some cancer cells may enter the bloodstream, spreading from the pancreas to other parts of the body
- New tumors may arise in other organs. If this happens, the cancer is known as metastatic. But no matter where the cancer spreads, it will still be called pancreatic NET, because it started in the neuroendocrine cells of the pancreas

Please see Important Safety Information on pages 6-9 or 38-41. Please see patient Medication Guide and full Prescribing Information, including Boxed Warning regarding serious liver problems, attached.




THERE ARE TWO TYPES OF PANCREATIC NET

- **Functional tumors** release much higher than average levels of hormones into the bloodstream
- **Nonfunctional tumors** do not release hormones into the bloodstream

STAGES OF PANCREATIC NET

There are several stages of pancreatic NET. To determine the cancer's stage, doctors will measure the tumor size. The image below is an example of tumor size.

STAGE	DEFINITION
Stage IA	Tumor is found only in the pancreas and is 2 centimeters or smaller.
Stage IB	Tumor is larger than 2 centimeters and has not spread beyond the pancreas.
Stage IIA	Tumor has spread beyond the pancreas, but it has not invaded nearby major blood vessels, lymph nodes, or other parts of the body.
Stage IIB	Tumor of any size that has spread to nearby lymph nodes, but has not invaded nearby major blood vessels or other parts of the body.
Stage III	Tumor has invaded nearby major blood vessels. It may or may not have spread to nearby lymph nodes, and has not spread to other parts of the body.
Stage IV	Any tumor that has spread to other parts of the body.
Image is not actual size	Marble (2 cm) 

SUTENT AND THE TREATMENT OF ADVANCED PANCREATIC NET

FIND THE BEST TREATMENT FOR YOU

Depending on the stage of the cancer, several treatments may be available. These can include:

- Surgery to remove the tumor
- Chemotherapy or radiation to kill the cancer cells
- Hormone therapy, such as somatostatin analogs (SSAs) if the tumor is a functional pancreatic NET. SSAs help to control the symptoms caused by a functional tumor's ability to release excess hormones into the body
- Anti-angiogenesis therapy, such as SUTENT

SUTENT is a therapy that may slow or in some cases may stop the growth of advanced pancreatic NET. SUTENT may also help shrink tumors. SUTENT is not a cure and not all patients will experience the same result.

SUTENT can cause serious liver problems, including death. Patients should stop taking SUTENT if they have symptoms of inflammation of the pancreas or liver failure.

*Please see Important Safety Information on pages 6-9 or 38-41.
Please see patient Medication Guide and full Prescribing Information,
including Boxed Warning regarding serious liver problems, attached.*



SUTENT HAS BEEN PROVEN EFFECTIVE IN TREATING ADVANCED PANCREATIC NET

A clinical study has proven SUTENT as an effective treatment for advanced pancreatic NET.

The results:

- Patients treated with SUTENT experienced nearly 2 times as many months of progression-free survival compared with those on placebo. Progression-free survival is the length of time from the start of treatment that patients remain alive and their disease does not worsen
- In addition, 9.3% of patients saw their tumors shrink, compared with 0% of those taking placebo

The data represent an average and not all patients may experience the same results.

GET THE MOST FROM YOUR TREATMENT

To get the most from your treatment, work closely with your doctor. In addition to the help your doctor can provide, you will also find information in this handbook about **possible side effects** and **more you can do**.





POSSIBLE SIDE EFFECTS

LEARN ABOUT POSSIBLE SIDE EFFECTS AND WAYS TO HELP MANAGE THEM

During treatment with SUTENT, many patients have side effects. Some can be managed but others are more serious and may not be manageable. Your healthcare provider may change your dose or stop your treatment. It's important to learn about the side effects you may experience on SUTENT. There are things that you and your doctor can do to help manage the impact of many of these side effects.

In this section, you will learn about:

- Important safety information
- Possible serious side effects
- Common side effects and ways to help manage them

Be sure to pay attention to all your side effects. They can be important signs that let you and your doctor know what is happening in your body.

Before starting SUTENT, tell your doctor about any side effects you have had from other medicines and treatments. As you start taking SUTENT, let your doctor know if you notice any new side effects or a change in your existing side effects. Also tell your doctor if you notice any side effects that are not listed in this brochure. Based on your experience, your doctor may change your dose or stop treatment with SUTENT.

Please see Important Safety Information on pages 6-9 or 38-41. Please see patient Medication Guide and full Prescribing Information, including Boxed Warning regarding serious liver problems, attached.

SUTENT^{capsules}
sunitinib maleate

For my fight

SAFETY INFORMATION YOU NEED TO KNOW

IMPORTANT SAFETY INFORMATION

SUTENT can cause serious liver problems, including death.

Tell your healthcare provider right away if you develop any of the following signs and symptoms of liver problems during treatment with SUTENT:

- Itching
- Dark urine
- Yellow eyes or skin
- Pain or discomfort in the right upper stomach area

Your healthcare provider should do blood tests to check your liver function before you start taking SUTENT and during treatment.

Pregnancy and breastfeeding:

- SUTENT may harm an unborn baby. You should not become pregnant while taking SUTENT. Tell your healthcare provider right away if you become pregnant while taking SUTENT
- Do not breastfeed while taking SUTENT

Tell your healthcare provider about all the medicines you take, including prescription medicines and nonprescription medicines, vitamins, and herbal supplements. Using SUTENT with certain other medicines can cause serious side effects. You may have an increased risk of severe jaw bone problems (osteonecrosis) if you take SUTENT and a bisphosphonate medicine (Actonel, Aredia, Boniva, Didronel, Fosamax, Reclast, Skelid, or Zometa). Talk with your healthcare provider before starting any new medicines.

Please see patient Medication Guide and full Prescribing Information, including Boxed Warning regarding serious liver problems, attached.

Tell all of your healthcare providers and dentists that you are taking SUTENT. They should talk to the healthcare provider who prescribed SUTENT for you, before you have **any** surgery, or medical or dental procedure.

SUTENT may cause serious side effects, including:

- **Serious liver problems, including death**
- **Heart problems**—Heart problems may include heart failure and heart muscle problems (cardiomyopathy) that can lead to death. Tell your healthcare provider if you feel very tired, are short of breath, or have swollen feet and ankles
- **Abnormal heart rhythm changes**—Your healthcare provider may do electrocardiograms and blood tests to watch for these problems during your treatment with SUTENT. Tell your healthcare provider if you feel dizzy, faint, or have abnormal heartbeats
- **High blood pressure**—Your healthcare provider may check your blood pressure during treatment with SUTENT. Your healthcare provider may prescribe medicine for you to treat high blood pressure, if needed
- **Bleeding sometimes leading to death**—Tell your healthcare provider right away if you have any of these symptoms or a serious bleeding problem:
 - Painful, swollen stomach (abdomen)
 - Vomiting blood
 - Black, sticky stools
 - Bloody urine
 - Headache or change in your mental status

Your healthcare provider can tell you other symptoms to watch for.

(Continued on next page.)



For my fight

SAFETY INFORMATION YOU NEED TO KNOW

(Continued from previous page.)

- **Jaw-bone problems (osteonecrosis)**—Severe jaw bone problems may happen. Your healthcare provider should examine your mouth before you start SUTENT. Your healthcare provider may tell you to see your dentist before you start SUTENT
- **Tumor lysis syndrome (TLS)**—TLS is caused by the fast breakdown of cancer cells and may lead to death. TLS may cause you to have nausea, shortness of breath, irregular heartbeat, clouding of urine and tiredness associated with abnormal laboratory test results (high potassium, uric acid and phosphorous levels and low calcium levels in the blood) that can lead to changes in kidney function and acute kidney failure. Your healthcare provider may do blood tests to check you for TLS
- **Hormone problems, including thyroid and adrenal gland problems**—Your healthcare provider may do tests to check your thyroid and adrenal gland function during SUTENT treatment. Tell your doctor if you have any of the following signs and symptoms:
 - Tiredness that worsens and does not go away
 - Loss of appetite
 - Nausea or vomiting
 - Diarrhea
 - Fast heart rate
 - Weight gain or weight loss
 - Feeling depressed
 - Heat intolerance
 - Feeling nervous or agitated, tremors
 - Sweating
 - Irregular menstrual periods or no menstrual periods
 - Headache
 - Hair loss

Please see patient Medication Guide and full Prescribing Information, including Boxed Warning regarding serious liver problems, attached.

Common side effects of SUTENT include:

- The medicine in SUTENT is yellow, and it may make your skin look yellow. Your skin and hair may get lighter in color
- Tiredness
- Weakness
- Fever
- Gastrointestinal symptoms, including diarrhea, nausea, vomiting, mouth sores, upset stomach, abdominal pain, and constipation. Talk with your healthcare provider about ways to handle these problems
- Rash or other skin changes, including drier, thicker, or cracking skin
- Blisters or a rash on the palms of your hands and soles of your feet
- Taste changes
- Loss of appetite
- Pain or swelling in your arms or legs
- Cough
- Shortness of breath
- Bleeding, such as nosebleeds or bleeding from cuts

Call your healthcare provider if you have any swelling or bleeding during treatment with SUTENT.

You are encouraged to report negative side effects of prescription drugs to the FDA. Visit www.fda.gov/medwatch, or call 1-800-FDA-1088.

HAVE QUESTIONS ABOUT WAYS TO HELP MANAGE COMMON SIDE EFFECTS?

Call 1-877-5-SUTENT (1-877-578-8368), 9:30 AM to 7 PM ET, Monday through Friday to speak with an Oncology Certified Nurse.

 **SUTENT**^{capsules}
sunitinib malate

For my fight



WAYS TO HELP MANAGE SIDE EFFECTS

There are steps you can take on your own to ease some of these problems. The following is a list of some common side effects and how they may be able to be managed. Not all side effects are manageable and dose interruptions and/or dose reductions may be needed during treatment with SUTENT.

FATIGUE

While you are taking SUTENT, you may feel tired or weak. Fatigue is common during treatment for cancer. Call your doctor or nurse if you feel tired or weak while on SUTENT. These tips may help:

- Take short naps or breaks
- Eat well and drink plenty of fluids
- Take short walks or do light exercise if you feel up to it
- Do things that are relaxing, such as listening to music or reading
- Ask your doctor if there are over-the-counter or prescription medications that may help you manage your condition

NAUSEA OR VOMITING

It is best to call your doctor or nurse at the first sign of nausea or vomiting. This is especially important if these symptoms keep you from taking your oral medications. Your healthcare provider may prescribe a medicine for these symptoms.

If you experience nausea or vomiting, these tips may help:

- Eat small meals
- Avoid foods that are sweet, fried, or fatty
- Drink lots of fluids, but in small amounts

Please see Important Safety Information on pages 6-9 or 38-41. Please see patient Medication Guide and full Prescribing Information, including Boxed Warning regarding serious liver problems, attached.

 **SUTENT**^{capsules}
sunitinib malate

For my fight

COMMON SIDE EFFECTS AND WAYS TO HELP MANAGE THEM

WAYS TO HELP MANAGE SIDE EFFECTS

There are steps you can take on your own to ease some of these problems. The following is a list of some common side effects and how they may be able to be managed.

NAUSEA OR VOMITING (CONTINUED)

If you vomit, start with small amounts of water, broth, or other clear liquids when you are ready to eat again. If that stays down, then try soft foods. Some examples include: gelatin, plain cornstarch pudding, yogurt, strained soup, or strained cooked cereal. Slowly work up to eating solid food. Make sure that you do not eat any food that you are allergic to.

INCREASED BLOOD PRESSURE

SUTENT may cause your blood pressure to rise. Your doctor may check your blood pressure while you are being treated with SUTENT. If there are issues, you may also receive treatment for high blood pressure (hypertension). Tell your doctor or nurse if you have high blood pressure or a history of heart disease.

If you already have high blood pressure and are receiving treatment, your doctor may change it as needed. Your doctor may also ask you to track your blood pressure regularly in a diary. Follow the advice of your doctor or nurse—especially if you have any questions or concerns.

Please see Important Safety Information on pages 6-9 or 38-41. Please see patient Medication Guide and full Prescribing Information, including Boxed Warning regarding serious liver problems, attached.



UPSET STOMACH

Upset stomach is common for people who are being treated for cancer. While taking SUTENT, you may have this problem. Call your doctor or nurse if you have an upset stomach. If you do, these tips may help:

- Avoid heavy meals, coffee, and alcohol
- Sleep in a more upright position, propped up on a pillow
- Ask your doctor if there are over-the-counter or prescription medications that may help you manage your condition
- Reduce your stress with meditation, yoga, or music

MOUTH PAIN

While taking SUTENT, you may develop mouth pain. Your symptoms may include mouth sores, redness, a white coating of the tongue, bleeding gums, or trouble swallowing. Call your doctor or nurse if you experience any of these problems. If you have mouth pain, these tips may help:

- Avoid hot, spicy, or acidic foods
- Eat foods that are soft
- Use a straw for drinking liquids
- Use an alcohol-free mouthwash, and rinse your mouth often with water
- Avoid toothpastes with whiteners (ie, peroxide) and use a soft toothbrush
- Ask your doctor if there are over-the-counter or prescription medications that may help you manage your condition



COMMON SIDE EFFECTS AND WAYS TO HELP MANAGE THEM

WAYS TO HELP MANAGE SIDE EFFECTS

There are steps you can take on your own to ease some of these problems. The following is a list of some common side effects and how they may be able to be managed.

SKIN CONDITIONS

Skin conditions, such as rash and dry skin, are other side effects you may have. You may notice dryness, thickening, calluses, or cracking of the skin on the palms of your hands and soles of your feet. Some patients may have blisters or a rash. This is called hand-foot syndrome. Tell your doctor or nurse if you start to develop skin problems. He or she may give you specific treatments, which may include lotions or moisturizers or pain medicines such as ibuprofen or acetaminophen.

You may be able to prevent or minimize the effects of hand-foot syndrome with the following tips:

- Wear thick cotton gloves and/or socks
- Avoid constrictive footwear and excessive friction
- Avoid hot water

*Please see Important Safety Information on pages 6-9 or 38-41.
Please see patient Medication Guide and full Prescribing Information,
including Boxed Warning regarding serious liver problems, attached.*



TASTE CHANGES

You may notice a change in the way food tastes while you are taking SUTENT. Call your doctor or nurse if you experience taste changes. If you have taste changes, these tips may help:

- Cold or frozen foods may taste better than hot foods
- Flavor your food with herbs, spices, sugar, or sauces
- Keep a clean and healthy mouth by brushing and flossing often

DIARRHEA

Diarrhea is defined as three or more loose or watery stools/bowel movements in one day. If you have these symptoms, call your doctor or nurse. It is important for you and your doctor to try to manage diarrhea as soon as it begins. Ask your doctor or nurse if you can be treated with over-the-counter medications.

If you have diarrhea, these tips may also help:

- Avoid spicy foods, fatty foods, caffeine, and fruit
- Eat only mild foods
- Drink water often—but only in small sips




SUTENT^{capsules}
sunitinib malate
For my fight



MORE YOU CAN DO

HEALTHY CHOICES TO COMPLEMENT YOUR TREATMENT PLAN

You've already taken some important steps concerning your cancer. You have learned about the type of cancer you have and how SUTENT can help. But there are other things you can do to manage your condition.

This section talks about lifestyle choices that you may consider making that can go hand in hand with your treatment plan.

STOP SMOKING

If you are a current smoker, quitting now will improve your overall health. According to the National Cancer Institute:

- Continuing to smoke may decrease the effectiveness of treatment and may worsen treatment side effects
- If you have surgery for your cancer, continuing to smoke will cause your wounds to heal more slowly

Please see Important Safety Information on pages 6-9 or 38-41. Please see patient Medication Guide and full Prescribing Information, including Boxed Warning regarding serious liver problems, attached.


SUTENT[®]
sunitinib malate
For my fight

MORE YOU CAN DO

EAT RIGHT

It's important to maintain a healthy weight and eat a well-balanced diet that includes more fruits, fresh vegetables, whole grains, and high-fiber foods.

- Many people with cancer don't take in enough protein and calories. Getting a healthy balance of each can give you a better chance of healing well, fighting off infection, and maintaining your energy level
- Along with protein, a healthy diet also includes nutrients, vitamins, minerals, carbohydrates, water, and fat. All can help to better support the body
- Good nutrition and a healthy diet may help you to better manage the symptoms and side effects of cancer and its treatment

These healthy living tips are general information for anyone fighting cancer. SUTENT has not been shown to improve daily activities.

*Please see Important Safety Information on pages 6-9 or 38-41.
Please see patient Medication Guide and full Prescribing Information,
including Boxed Warning regarding serious liver problems, attached.*



BALANCE EXERCISE WITH REST

You may be experiencing fatigue but it's still important to stay active as best as you can.

Ask your doctor before starting any new activities. He or she may suggest simple ways to add exercise to your daily life.

It can also help to rest when needed. If you feel tired and rundown, your body is most likely trying to tell you that it needs a rest. Take a daytime nap if it's needed.

REDUCE STRESS

Try to avoid added pressure in your life.

- Don't be afraid to ask for help. Allow friends, family, and co-workers to offer their support and assistance when needed
- Adopt relaxation techniques. Take up meditation, yoga, and/or deep breathing exercises
- Know your limitations. Exercise your right to say "no" if you are asked by a friend or co-worker to take on a project that you neither have the time nor energy to complete
- Seek out a local support group. Share your thoughts, feelings, and insights with others like you who may be faced with a cancer diagnosis


SUTENT^{capsules}
sunitinib malate
For my fight

SUTENT SUPPORT RESOURCES

DO YOU HAVE QUESTIONS ABOUT SUTENT?

SUTENT In Touch is here to help answer them.

It's common to have questions about your type of cancer and treating it with SUTENT. That's why the SUTENT In Touch program was created. It's a free, personalized support program that connects you to relevant information, tips, and tools throughout SUTENT treatment.

Program enrollment offers patients access to useful resources, including:

- Access to the SUTENT In Touch Call Center and its Oncology Certified Nurses, trained to answer questions about SUTENT and the management of common side effects
- Personalized mail and e-mail communications, with relevant, timely information about their treatment
- E-mails to keep SUTENT medication cycles on schedule
- A free treatment journal, so patients can record their experiences and share with the healthcare team

Think of the SUTENT Patient Call Center as a complement to your treatment team. Our Oncology Consultants are there to provide you with added support. They can even check in and call you at key points along your treatment path.

Patients can enroll by simply calling 1-877-5-SUTENT (1-877-578-8368), visiting SUTENT.com, or completing the business reply card included in this handbook.

Please see Important Safety Information on pages 6-9 or 38-41. Please see patient Medication Guide and full Prescribing Information, including Boxed Warning regarding serious liver problems, attached.



SUTENT® IN TOUCH

INFORM • SUPPORT • CONNECT

Join SUTENT In Touch today. Call the SUTENT Patient Call Center to speak with a trained oncology nurse at 1-877-5-SUTENT (1-877-578-8368), 9:30 AM to 7 PM ET, Monday through Friday.

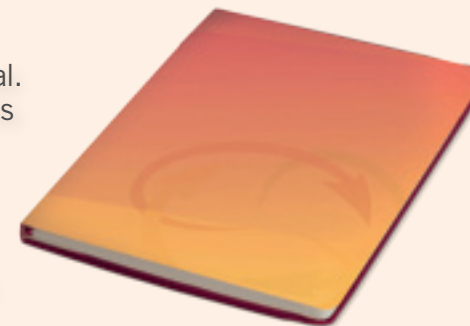
SUTENT IN TOUCH does not replace the advice of your healthcare professional. Be sure to call your doctor or nurse right away if you have side effects or questions about your treatment.

JOIN AND RECEIVE A FREE JOURNAL

When you call, be sure to request a free journal. Inside, you will find more information and tools to help with your SUTENT treatment:

- Tips on managing your condition
- Organizational tools for your treatment
- Additional information you may find helpful
- **FREE SUTENT JOURNAL**

Call 1-877-578-8368 to request your journal today.



 **SUTENT^{capsules}**
sunitinib malate

For my fight

SUTENT SUPPORT RESOURCES

SUTENT.com

SUTENT.com is the place to find out more about your disease and treatment with **SUTENT**. You will find tips about living with cancer. Get answers to common questions about SUTENT. Plus find links to organizations and websites that can help you during treatment. There are also tools to help you manage your symptoms and side effects. Resources, such as downloadable brochures, and information about reimbursement support services are also available. Visit us online anytime at **SUTENT.com**.



Please see Important Safety Information on pages 6-9 or 38-41. Please see patient Medication Guide and full Prescribing Information, including Boxed Warning regarding serious liver problems, attached.

REIMBURSEMENT SUPPORT SERVICES AND PATIENT ASSISTANCE FROM FIRST RESOURCE®

Pfizer First Resource offers services to help patients access Pfizer medicine. Enrollment is easy. A simple phone call can start the process.

- **Reimbursement Support Services**—A First Resource Counselor will help you understand your coverage and reimbursement options, including benefit verification
- **Alternate Funding Assistance**—First Resource can help you find alternate sources of funding if you need them
- **Appeals Process Information**—If a claim is underpaid or denied, First Resource will investigate and explain the appeals process

Call First Resource® at 1-877-744-5675 to start the process.

Log on to: www.FirstResourceProgram.com for more information, or to find out if any of these services are right for you.*

First Resource is a part of the Pfizer Helpful Answers® family of patient assistance programs—a joint program of Pfizer Inc and the Pfizer Patient Assistance Foundation™.

**Services vary by eligibility.*


SUTENT^{capsules}
sunitinib malate
For my fight

CANCER RESOURCES AND SUPPORT

The following list of organizations and resources are provided to help you learn more about cancer and where to tap into patient support services.

THE AMERICAN CANCER SOCIETY® (ACS)

(800) 227-2345 | cancer.org

- Current news about cancer studies
- Facts about treatments
- Stories about cancer survivors
- Helpful advice

NATIONAL CANCER INSTITUTE® (NCI)

(800) 422-6237 | cancer.gov

- Facts about cancer, treatments, and clinical trials
- How to pay for cancer treatment
- Information on choosing hospice and home care
- Finding support groups



Please see Important Safety Information on pages 6-9 or 38-41. Please see patient Medication Guide and full Prescribing Information, including Boxed Warning regarding serious liver problems, attached.

CANCERCARE®

(800) 813-HOPE (813-4673) | cancercare.org

- Helpful cancer advice and counseling
- Facts about cancer
- Free financial services



CANCER HOPE NETWORK

(877) HOPENET (467-3638) | cancerhopenetwork.org

- Support services for people living with cancer
- Matches patients one-on-one with cancer survivors

KIDNEY CANCER ASSOCIATION® (KCA)

(800) 850-9132 | kidneycancer.org

- A group of patients, families, doctors, and healthcare providers involved with kidney cancer and treatments
- Simple ways to make living with kidney cancer easier
- How to find and meet other kidney cancer patients and survivors

CANCER RESOURCES AND SUPPORT

GIST SUPPORT INTERNATIONAL (GSI)

(215) 340-9374 | gistsupport.org

- Support for GIST patients and their families and friends
- Information on current GIST research
- Free financial services

LIFE RAFT GROUP

(973) 837-9092 | liferaftgroup.org

- Patient support
- Efforts for GIST research
- Information on GIST and research

PANCREATIC CANCER ACTION NETWORK®

(877) 272-6226 | pancan.org

- Support for pancreatic cancer and pancreatic NET patients
- Advancement of pancreatic cancer research
- Volunteer opportunities

THE LUSTGARTEN FOUNDATIONSM

(866) 789-1000 | lustgarten.org

- Information on pancreatic cancer
- Ways to support research and awareness
- Volunteer opportunities



Please see Important Safety Information on pages 6-9 or 38-41. Please see patient Medication Guide and full Prescribing Information, including Boxed Warning regarding serious liver problems, attached.

SUTENT^{capsules}
sunitinib malate
For my fight

Still have some questions? 1-877-5-SUTENT (1-877-578-8368) | SUTENT.com

Please see Important Safety Information on pages 6-9 or 38-41. Please see patient Medication Guide and full Prescribing Information, including Boxed Warning regarding serious liver problems, in attached.

 **SUTENT**^{capsules}
sunitinib malate

For my fight



SUU472908

© 2012 Pfizer Inc.

All rights reserved.

Printed in USA/June 2012

